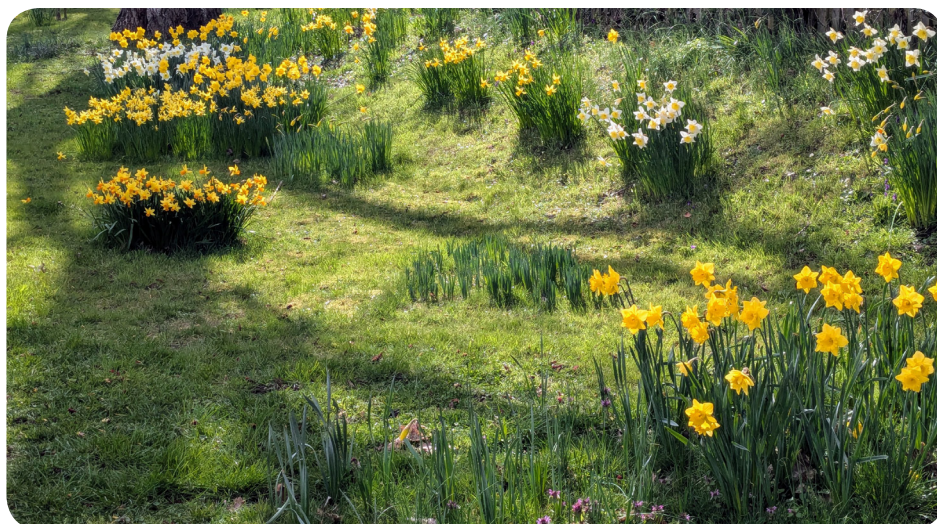


The Reydon Robin

*The biannual, complimentary
news magazine, for Reydon*



Spring 2026

ISSUE 17

DATES FOR YOUR DIARY

From Spring 2026

- Wed. 25th Mar.–
Wed. 8th Apr.** Reydon Art Group Exhibition, Craftco, Southwold.
- Fri. 3rd Apr.** Service of the Last Hour, St. Margaret's, Reydon, 2pm (see p.9).
- Sun. 5th Apr.** Easter Day Holy Communion (CW), St. Margaret's, Reydon, 9.30am; St. Peter & St. Paul, Wangford, 11.15am (see p.9).
- Sun. 5th Apr.** Southwold Railway Open Day, Steamworks, Blyth Road, Southwold, 1–4pm. Entry Free. Also on Sun. 3rd May, 24th May & 7th Jun. See www.southwoldrailway.co.uk for dates in Jul.–Oct and info.
- Mon. 6th Apr.** Handel's *Messiah*, St. Edmund's Church, Southwold, 2–5pm rehearsal, 6pm performance (see p.14).
- Fri. 10th Apr.** Family Bingo Night, Reydon Village Hall, Doors open at 6.30pm, eyes down 7pm. Reydon Christmas Lights fundraiser.
- Wed. 22nd Apr.** VHC Games, Raffle and Social Afternoon, Millennium Hall, 2.30–4pm. Everyone welcome (see p.10).
- Fri. 24th Apr.** Free Community Coffee Morning, Reydon Village Hall, 9–11.30am (see p.13).
- Sat. 25th Apr.** Blyth Valley Rotary Charter Night Celebration, Halesworth Golf Club, 6.30pm. £35 per person. Info: info@blythvalleyrotary.co.uk.
- Sat. 25th Apr.** Quiz Night, Cardinal Newman Hall (Old Sorting Office), 7pm. £3 per person. Teams of 4. Raising funds for Reydon Rainbows. Book: frogclock@hotmail.com
- Fri. 1st–
Sun. 3rd May** Southwold Arts Festival 2026 (see back page).
- Sat. 9th May** Quiz Night, Reydon Village Hall, 7pm. £5 per person. Raising funds for the RVH Golden Anniversary Appeal Fund (see p.13).
- Sat. 16th May** Starlight 10K Walk, Old Hall, Southwold Café and Walks. 7pm start. Info: blythvalleyrotary.co.uk
- Fri. 15th May** Free Community Coffee Morning, Reydon Village Hall, 9–11.30am (see p.13).
- Sat. 16th May** Music with Table 9, Reydon Village Hall, 7pm. Local band playing soft-rock classics (see p.13).
- Sat. 1st Aug.** The Reydon Show, Reydon Village Hall, 2pm. Annual exhibition featuring crafts, produce and photography. Kids enter free.
- Sat. 12th–
Sun. 13th Sep.** Reydon Scarecrow Trail Weekend (see p.14).

INTRODUCTION and WELCOME



Linda Coe, Chair,
Reydon Parish Council

Welcome to the Spring 2026 edition of *The Reydon Robin*, which is delivered free to more than 2,500 residents by our brilliant local volunteers. This season, associated with growth and rebirth, is mirrored by the bustling activity across our village.

It is a pleasure to see the benefit local initiatives bring. We are thrilled that work to restore the rare WWI Pillbox at Mights Bridge is beginning, supported by a £10,000 grant from the Parish Council (see p.7). Our social heart continues to beat at the Village Hall, which now boasts a

beautifully resurfaced floor (p.13), while the Sole Bay Bowls Club is fully refurbished and welcoming new members (p.15). Additionally, we celebrate the third anniversary of our Community Pantry this May (p.12).

We must sadly mark the passing of Anita Barbrook, a “Reydon Star” if ever there was one, whose selfless work was vital to our community. See p.11 for a warm and heart-felt tribute to her.

Please join us for the Annual Parish Meeting on Thursday, 23rd April at the Village Hall. We look forward to presenting this year’s winners with their well-deserved “Reydon Stars” during the evening.

To keep Reydon thriving, we are still seeking volunteers to distribute this magazine or help at the Community Pantry. Additionally, we would also be particularly grateful for anyone willing to assist in keeping their nearest village road sign clean. Maintaining them ensures they remain welcoming for residents and visitors alike, reflecting the pride we take in our local streetscape.

Finally, our thanks to the Southwold Arts Festival for sponsoring this edition. This year’s programme promises to be as exciting and interesting as ever.

Best wishes for Easter, Linda Coe

We have decided to move from three editions of *The Reydon Robin* to two per year, partly due to the difficulty of finding enough volunteers to help us with distribution. This means our next edition will now be arriving in early winter. We are currently working towards a submission deadline of Friday, 27th November 2026, with publication on Thursday, 10th December 2026. Should these dates change, we will make sure to publicise this as widely as possible. If you would like to contribute a story or an update to our next edition, we would love to hear from you – please get in touch with us directly at reydon.robin@reydonvillage.org.

EASTON BAVENTS LOST AND FOUND

An afternoon of talks was held at Reydon Hall last October aimed at shedding light on the lost settlement of Easton Bavents. Once the most easterly point in Britain, it has now all but disappeared. The event was prompted by the publication of a PhD thesis, *Easton Bavents c.1450–c.1680 The rise, fortune and decline of a maritime community*, by Dr. Louise Kennedy, who agreed to kick off what became a wide-ranging exploration of expert and local knowledge as well as personal responses to this elusive and enigmatic strip of land.

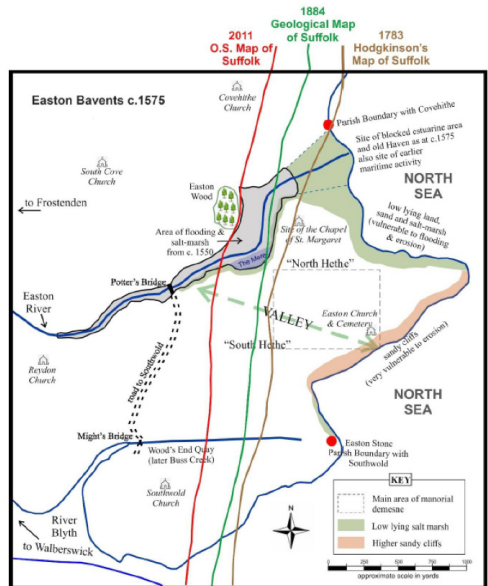
Using manorial records, wills and other surviving documents from the Medieval period, Dr. Kennedy's research brought fresh insight into a thriving settlement of seafarers, both local and foreign. She was even able to reconstruct the approximate layout of the settlement (illustrated below with her kind permission) and plot the houses along the main street, Kingsway. Could it, she speculated, be the "Extensio", the promontory mentioned by Ptolemy as long ago as 122 CE?

Easton Bavents both benefitted from, then ultimately was destroyed by, coastal change. The offshore sandbanks had once created a haven for ships in the Middle Ages, enabling the village to grow – reaching a peak of over 300 inhabitants in 1524. In common with adjacent towns, this included a large number of foreigners, mostly from the Low Countries, but also from as far away as Spain, and in contrast to Southwold, some of these were married men who had settled with English wives and families. However, movement of the sandbank, exposure to erosion and plague saw the population plummet in the 16th Century. The parish church fell out of use by 1590 and a century later there were no more than perhaps 40 inhabitants.

Erosion has continued to affect lives. Juliet Blaxland, author of *The Easternmost House*, who had occupied one of the last cottages on the cliff, spoke movingly about the experience of living daily on the edge and how it changes your outlook towards time and the impermanence of existence. She described walking on the beach, feeling the weight of all those who had lived in the space above, now vanished.

Local fossil finder Ian Cruickshanks took us through the finds he has made at Easton Bavents, including precious and previously unknown species from the Pleistocene epoch. And local potter Jenny Newhouse brought along samples of the blue-grey crumbly clay gathered from the cliffs and spoke of the challenges of working it as well as the influence of this special place on her art.

We were very grateful to them all as well as the other local people who shared memories and photographs of Easton Bavents, including the RAF listening station, the Inter-War airfield and the houses now lost to the sea.



Source – Plan drawn by Ivan Bunn, 2024. Based on drawing provided by Louise Kennedy, based on 1531 manorial survey, Chart of East Anglia and Dutch coast, V/C 37/2, NRO; Hodgkinson's map of Suffolk, 1783; Geological map of Suffolk, 1884; Ordnance Survey map of Suffolk, 2011 and other sources.

Not to be reproduced without Dr. Kennedy's permission

James and Emmeline Winterbotham

HEAVENS ABOVE

I was asked to contribute to the last *Reydon Robin* because of my interest in aerial and astro-photography. Both are highly weather dependent. Using a drone to capture aerial images requires it to be dry and the wind relatively calm. For astrophotography, there has to be clear sky.

Since I last wrote, the weather has not been kind. However, I have photos to share. Most aerial shots are taken flying from North Road, but I enter Reydon airspace to take images looking south to Southwold and, in all other directions, Reydon features. The CAA regulations state the operator needs direct visual contact with the drone at all times. There is an operational constraint in the permitted range.

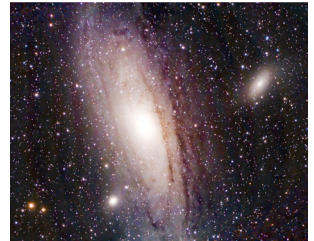
Early in the New Year, we had snowfall and the wind was calm for a flight. We do not experience snow often and it was interesting to see it on Reydon Marshes.



The pig fields are clearly visible and, in the distance, Easton Broad can be seen.

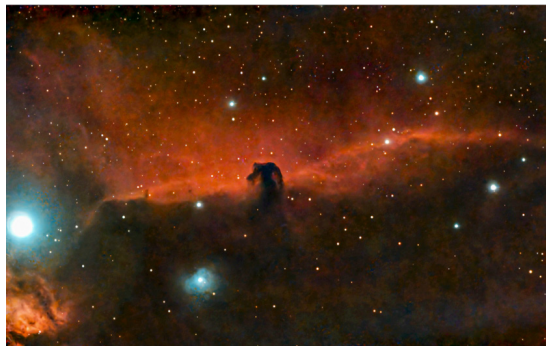
I had the drone in the air when barnacle geese landed on the Marsh (top right). They have not visited as much as in previous years. Maybe there are better feeding grounds nearby. The rain has made the ground wet and could be deterring them.

I have selected two images of DSOs (Deep Sky Objects). The first is Andromeda. It is 2.5 million light years away, and contains a trillion stars. It was first mentioned around the year 964 CE by the Persian astronomer Abd al-Rahman al-Sufide, who described it as a nebulous cloud. It was catalogued by Charles Messier as M31 in 1784 when it was still thought to be a nebula. It wasn't until the 1920s that it was categorised as a galaxy.



The second DSO is a nebula. It is clear why it is named the Horsehead Nebula. It was discovered in 1888 by Williamina Fleming, a Scottish astronomer.

It can be found in the constellation of Orion and is a small dark nebula located about 1,375 light years away. The darkness of the head is caused by dust clouds blocking the light from the stars located behind it. The clouds themselves are a star-forming region.



Jonathan Hadgraft

NATURE NOTES

A curious technique, how best to describe it? As a dance, or stomping in an effort to keep warm? It turns out neither.

Herring gulls engage in the ritual of hopping from one foot to the other on short grass. They are worm charming. Gulls seem to have the advantage in this practice, for they have webbed feet, which



must amplify the sound and vibration below, which the unfortunate worm translates into either a downpour, or, worse, a tunnelling mole or snuffling badger. So in its bid to escape, it wriggles its way out of the ground. Its fate is sealed by a hungry gull, no escape.

I watched this herring gull for ten minutes in which time it had charmed and eaten 28 worms! Greedy bird!

Slight departure from the normal, here is an historical picture, taken several years ago at Easton Bavents of one of the old sheep paddocks.

Note the five-bar gate and the removed kissing gate propped up next to it. This gate was removed and replaced with the five-bar gate, the reason given to me was to keep the sheep in and the folk out. Presumably it was originally a Public Right of Way leading to Cliff Lane at the top of the hill. There are maps where it is clearly marked as a path. It would seem that someone has



taken a liberty to shut it down. Perhaps old closed or forgotten paths can be resurrected. It will be of interest where the coastal path will finally be routed. If it hugs the coast through Easton Bavents, it will be to the delight of folk who really enjoy coastal seascapes and nature.

If you walk the path, do keep an eye out at sea – always a pleasure to spot a grey seal or two
Early morning relaxation in the sun on Southwold's rock groynes.

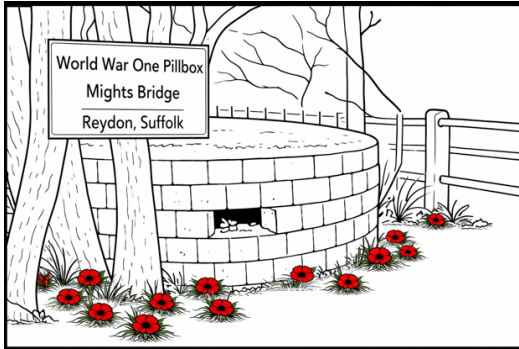


I'm a surf board!

Bill

This edition of The Reydon Robin is sponsored by Southwold Arts Festival

“LIVING HISTORY” – THE WWI PILLBOX



(Picture: David Eccles)

Local work to restore and re-purpose the rare World War One Pillbox at Mights Bridge is about to begin. This historic defence bunker has stood quietly by Buss Creek for over a century, built originally to defend the East Coast from enemy invasion. In the last 50 years, it had been neglected and, sadly, vandalised with many of its unique, concentric bricks thrown into the Creek.

Reydon Parish Council took ownership of the building in 2024, with a plan to restore the rare historic structure as a heritage asset and keep local history in mind. Geoff and Ben Cooper from Cooper and Denny Builders carried out a full structural survey and have prepared a schedule for the works, which includes rebuilding the walls and the casting of many new concrete bricks.

A Steering Group is developing the building as a “Living History” exhibit. As the Pillbox is not Listed or Scheduled, the wall where the most bricks are missing will be transformed into a viewing window, using toughened, laminated glass. Inside the Pillbox, visitors, school parties and passers-by etc. will be able to see the building almost as it was used during wartime, with a map table, a couple of .303 rifles (de-commissioned) and other items of daily use by the garrison.

A nearby information board will have contemporary reports about a possible enemy invasion in wartime, and the importance of defending the only road into Southwold, leading to the strategically important Harbour.

The Pillbox will be at the centre of a new Reydon Trail, which will see visitor points with specially sited QR codes, enabling access to historical details, e.g. the lost village of Easton Bavents, Buss Creek when tidal, the Blyth River Navigation, Reydon Quay, the Pillbox and several more locations. Walkers will be able to visit the new Trail at any time they wish.

The Pillbox Steering Group is also raising funds for the reconstruction of the Pillbox and the establishment of the Reydon Trail. Reydon Parish Council has provided a grant of £10,000 taken from the Community Infrastructure Levy, and the Reydon Trust have donated a very generous £5,000 towards this local initiative. The overall budget for the reconstruction and the establishment of the Reydon Trail is in the region of £47,000, so public fundraising is continuing in earnest. If you’d like to donate towards this exciting community project, our GoFundMe page is: www.gofundme.com/f/ww1-pillbox-restoration/

Or if you are able to provide more historical details about the Pillbox, please contact the Parish Clerk at clerk@reydonvillage.org or please call 07768 395465. Thank you.

Laurence Vulliamy

WHAT HAS YOUR PARISH COUNCIL EVER DONE FOR YOU?



Reydon Parish Council receives an annual Precept, collected via the Council Tax, to fund the work that it does for the local community. For 2026-27, the total Precept that the Parish Council will receive is £34,845.63, which is £25.82 for a Band D property (an increase of £1.64 from the current year).

The Parish Council considers very carefully how to spend this money to ensure that it benefits residents of Reydon. Some of the Precept is used to pay the salary of our part-time Parish Council Clerk, who does a fantastic job in ensuring that the Parish Council serves our community in a professional and effective manner. The Precept is also used to pay the salary of our part-time litter picker. Other essential costs include: office expenses, the Reydon Village website, *The Reydon Robin*, and hiring the Village Hall for Parish Council and Committee meetings. It is a legal requirement that these meetings are open to the public and press.

For the next financial year, the Parish Council has allocated money to ensure that the Recreation Ground and its play equipment are kept to a standard that will ensure residents can continue to enjoy using it. Similarly, there is a budget to maintain other valued communal areas, such as Jubilee Green and Bridgefoot Corner. The Parish Council is responsible for the upkeep of the allotments, although some of this is covered by the rent received from allotment users. The Parish Council provides financial support for the Pantry, a fantastic project which so many of our community use regularly. Finally, a proportion of the Precept is used to support the work of other local projects, including Reydon Christmas Lights, the Voluntary Help Centre and Feed All Children.

The Parish Council also receives money from the Community Infrastructure Levy. This is a charge placed on new developments in the local area. The Parish Council are keen to allocate this money to benefit Reydon residents and would therefore welcome bids from any local community groups with projects that are focused on supporting and improving the lives of those who live in our village. Further information about how to apply can be requested from the Parish Council Clerk (clerk@reydonvillage.org). All requests should be returned by 1st July 2026.

As Parish Councillors, we take our responsibilities in spending public money seriously and no decision, however small the amount, is taken without thoughtful discussion. This doesn't mean that we always get it right and we are keen to ensure that the decisions we take reflect the views of all Reydon residents. Please visit www.reydonvillage.org for the contact details of your Parish Councillors and the dates of forthcoming meetings.

This edition of The Reydon Robin is sponsored by Southwold Arts Festival

NEWS FROM ST. MARGARET'S CHURCH

"What's in it for me?"

A question that often consciously, or subconsciously, influences our decision making, living as we do in our world of consumer choice. Many people will have given something up for Lent, but, as we inwardly compute the calories lost or the health benefits of giving up chocolate or alcohol, maybe it is just as much about "what's in it for me" as it is about spirituality or self-discipline.

John Pritchard, the former Bishop of Oxford, writes about the relationship between spirituality and religion: "More and more of us describe ourselves as 'spiritual' and fewer and fewer as 'religious'. Twice as many people believe in a spiritual force within them as believe in a personal God beyond them."

A growth in spirituality and personal awareness is to be encouraged, but I wonder how far some of the more popular forms of spirituality tend to follow the consumer "what's in it for me" model, placing the individual at the centre and asking what "God" can do for us. Might I suggest, however, that spirituality as "me", looking for ways in which to be a more complete or fulfilled person, is a fallacy. The more we seek it for ourselves, the more it will elude us.

At this time of Lent and Easter, there is an opportunity to turn all this on its head. If we really do want self-fulfilment and wholeness, then we shouldn't try to find it for ourselves. The answer lies in another direction, and is to do with the way we live, the way we love and the way we treat others. We believe that there is one person who showed us the real way to live and to love. His focus was entirely away from himself and totally on others. His love for others was complete. Not a hint of "what's in it for me", always the other way round - "what's in it for them?"

I am of course talking about Jesus Christ, and if we can seek to model our lives on him and his approach to people and to life, then we will find, in the events of Holy Week and Easter, a renewal process like no other. Because, in the mystery of his passion, death and resurrection, even as we struggle to understand its full significance, Jesus opens up whole new ways of living. Not only that, but he also guarantees his presence with us, through his Spirit, for the rest of time. Now that is the real meaning of spiritual awareness.

With all good wishes for a spiritual and joyful Easter.

Services in Reydon and Wangford

Good Friday	Service of the Last Hour	2pm Reydon
Easter Day	Holy Communion (CW)	9.30am Reydon
		11.15am Wangford

FROM OUR MP

At the end of February, I convened a Westminster Hall debate on the merits of an energy developers' levy. I made the case that communities like ours are being asked to deal with the cumulative impact of multiple major infrastructure projects, all coming forward separately, but all placing pressure on the same communities.

That is at the heart of the concern I hear across our area. The problem is not simply one individual development. It is the lack of co-ordination between them, and the fact that local people are expected to absorb the combined and repeated impact.

On paper, projects may be assessed separately. But that is not how they are experienced in practice. Residents see the whole picture. They see repeated disruption, pressure on local roads, uncertainty for villages and the cumulative effect on the places they call home. Developers need to take a far more joined-up approach.

My debate was an opportunity to press that case directly to government. Where developers are bringing forward very large infrastructure schemes, they should contribute to the cost of better co-ordination in the communities affected.

This issue is about fairness: those creating the disruption and generating the return should fund the systems to manage the cumulative impact. Proper co-ordination would reduce bills, reduce duplication, prevent redesign and avoid the need for repeated construction and legal conflict. Proper co-ordination saves money.

That same principle has guided my contribution to the LionLink consultation. Our area cannot be treated as a series of separate planning applications on a map. People live with the combined impact in real life, and they deserve a system that recognises that.

Jenny Riddell-Carpenter MP

VOLUNTARY HELP CENTRE



The Voluntary Help Centre (VHC) in Southwold has now been a vital link for our local community for nearly 40 years. We have volunteers who help with car journeys to hospital, doctor and dentist appointments (45p per mile). We also help with shopping trips, vets visits, and any health appointments.

We also run a Lunch Club fortnightly, £8 for a two-course lunch – this is also a very social event, and we run a raffle and themed lunches. We have a monthly 100 Club. Starting on 22nd April, we have a games, raffle and social afternoon, with refreshments for £1 per person from 2.30 until 4pm.

We always need new volunteers – help us to help others. For details on all our events and requests for help, please contact Jane or Tracy at the VHC office on 01502 724549 or e-mail hello@southwoldvhc.com.

This edition of The Reydon Robin is sponsored by Southwold Arts Festival

ANITA BARBROOK A PILLAR OF THE REYDON COMMUNITY



We were very sad to hear that Anita Barbrook passed away on 21st March. Anita was one of the most hard working, selfless contributors to the community.

Her grand-daughter Laura Cliff writes: "Anita passed away, peacefully, on 21st March at St. Barnabas Care home, on what would have been her husband Ken's birthday.

"Anita and Ken started married life on North Road, Southwold and then on to Stradbroke Road taking on their first shop and later moving to

Reydon, setting up 'Barbrooks' in the late 1960s.

"Anita worked tirelessly for the community, as Chair of Reydon Christmas Lights, Chair of Southwold Save the Children, Secretary to the Reydon Village Hall and as a School Governor for Reydon Primary School. Anita was awarded a 'Reydon Star' by Reydon Parish Council for her outstanding service to the community of Reydon.

"She loved her family and is remembered with such fondness and respect, leaving her children Lynne, Carol, David and Matthew, and 13 grandchildren and 12 great grandchildren."

Charlotte Clark adds: "This very unassuming lady was the beating heart of Reydon and a powerhouse of community activity. Her dedicated work on Reydon Village Hall was vital to the Hall being there today. It was lovely to see her at every Reydon Christmas Lights Switch On, and at her events for Save the Children, which both raised money for the charity and brought the community together. All the while running her own business and being the centre of her own busy family. She was an amazing lady and will be much missed."

Anita Barbrook (14.2.1936–21.3.2026)

BLYTH VALLEY ROTARY CLUB



President Ronnie Carter and Blyth Valley Rotary Club continue to have fun and make a real difference to our local community by supporting some fantastic charities and special projects.

"Small but Mighty" Following on from last year's two big successful events, a new venture - Covehithe Plough Day - attracted a large enthusiastic crowd, and over £2,500 was raised and donated to our local Prostrate Cancer Charity.

Blyth Valley were also pleased to support both the Southwold and Reydon Christmas Light Up events. Unfortunately, bad weather meant our Annual Christmas Swim had to be cancelled, but thanks to generous donations and sponsorship, the RNLI, the Pear Tree Centre in Halesworth and the Alfred Correy Museum all received large cheques to help them continue their good work.

Blyth Valley Rotary meet regularly on Thursday evening at Sole Bay Bowls Club. With a number of speakers/trips out, we aim not only to help others, but also enjoy doing it!

"Having fun helping others" sums up our Rotary Club. If you feel that you would like to be part of the world's largest charitable organisation, visit our website at www.blythvalleyrotary.co.uk or contact our Secretary Steven Seager (stevenseager@gmail.com) for more information.

Colin Coe, Blyth Valley Rotary Club

NEWS FROM SOLE BAY HEALTH CENTRE

Following our successful recruitment round and appointment of Dr Sophie Beales to the Sole Bay team, we also want to inform you of two very significant retirements in the coming months.

After over 24 years of dedicated work as a GP in our two practices, Dr John Stammers will retire in June. Advanced Nurse Practitioner Julie Buckner will retire at the end of May after a similarly impressive 25 years at the Surgery. They have been hugely instrumental in making the Practice what it is. We will miss them both, but I am sure you will join us in wishing them well for their well-earned retirement.

Spring Covid Campaign

The Practice Covid Vaccination Programme is going well. Patients who are over 75 years old and the immunosuppressed will be contacted by the Practice if you have not been already.

Rigs Whittaker

REYDON & SOUTHWOLD COMMUNITY FRIDGE & PANTRY

It will be three years this May since the Reydon and Southwold Community Pantry and Fridge first opened its doors to redistribute food waste. New shifts are being piloted to enable us to reduce food waste even further, as follows:

- Monday 11am-1.30pm.
- Wednesday 9am-12 noon.
- Friday 9am-12 noon.

Towards the end of April, we will be asking our customers and volunteers for their views on the new hours.

We continue to see regular customers and also lots of new faces, and our volunteers enjoy having a chat with people.

Our team of volunteer drivers continue to collect each evening from the Co-op and Tesco in Southwold. And we still receive donations from the Cornish Bakery, KFC and Bookers. We also receive toiletries and sanitary products from the Hygiene Bank. And we continue to look for other places who may want to support this project. Thanks must go to all the suppliers who support us. The Warm Space Initiative has been funded again over the winter by East Suffolk Council and this has enabled the Community Breakfast/Lunch in collaboration with the Village Hall Management Committee to continue. This has enabled people to have something warm to eat and drink, and also to enable them to socialise. A big Thank You to Dorcas Rogers for her delicious homemade soups.

Since we began we have achieved the following:

- Made at least 1,563 collections.
- Collected 35,198kg of food or 83,806 meals.
- Saved 91,402kg of CO₂.

We are always looking for volunteers – whether it is to collect from our suppliers and/or to volunteer in the Pantry. If interested, please either contact Linda Coe, Sarah Jerman or Kim Harvey.

We would also like to thank Sole Bay Waste and Recycling Services, who provide us with our refuse bins and collect our waste. And also our wonderful volunteers and our fabulous customers.

If you haven't been in to see us, please do. Let's all do our bit to reduce food waste – here's to the next 12 months of this great community project.

Kim Harvey

SOLE BAY CARE FUND UPDATE

We at Sole Bay Care Fund are always looking at how best to serve and support our wonderful community. We continually review how funds raised are utilised and whether they can be used more effectively to maximise the benefit.

Sole Bay Care Fund was founded to aid support and care of local residents to meet health and social needs not funded by the NHS or Social Services. In the past, we have also been able to support a wider range of projects which have aided the community in different ways. Due to the current increased push for care in the community, the sometimes limited or at risk of becoming overwhelmed services in our area and the rise in the costs of care, we feel it is now important to refocus our resources and funding on direct care in the community.

The community bus was originally run by Southwold Town Council and then the Voluntary Health Centre (VHC). Sole Bay Care Fund took over the running of this in 2018. Over the years, the cost of running Mr. Bus has substantially increased and the number of people using the bus has declined to just a few people per week. The amount of money Mr. Bus has been costing the charity on a yearly basis would roughly equate to 400 hours of emergency care for someone in their own home or 70 night sits for those who cannot be left alone. Therefore, we have taken the sad decision to stop the Mr. Bus service to enable us to fund more direct care, which benefits a greater number of people.

We would like to take the opportunity to thank all that have supported Sole Bay Care Fund and Mr. Bus over the years, particularly the volunteer drivers, admin team and the sponsors, who have been indispensable and the backbone to the service. We hope that these volunteers will continue to help our wonderful community in conjunction with the VHC, who we will be working with to help ensure transport is available for those who need it most in the community. **Rigs Whittaker**

REYDON VILLAGE HALL

The improvements at the Hall continue and we had its floor resurfaced over the Christmas and New Year – it now looks very shiny and a completely different colour from the one we had seen for some decades. All of this work is only possible thanks to the Reydon Trust and Reydon Parish Council, and the community supporting the Village Hall Management Committee.

We have some fundraising events upcoming: On Saturday, 9th May we are having another Quiz Night. It starts at 7pm, is £5 per person, with teams up to six people. You can bring your own drinks and snacks, and there will be a raffle. Book your tickets with Charlotte at Southwold Library (t: 07715 388916, e: frogclock@hotmail.com).

Then on Saturday, 16th May, we have a music event with Table 9 from 7pm. Table 9 are a local band playing soft-rock classics from the 1960s to the 2000s: great songs everyone knows and loves. Tickets are £12 per person and there will be a bar. Tickets available to book from Charlotte (details above) or online at www.ticketsource.co.uk/reydonvillagehall.

Reydon Village Hall Management Committee, in conjunction with Reydon and Southwold Community Fridge and Pantry, also continues to facilitate our monthly Free Community Coffee Morning. The next one is Friday, 24th April, 9-11.30am at Reydon Village Hall. There's tea, coffee and toast (pastries when available). In May, it will be on Friday, 15th at the same time.

Remember if you have a party, event, course, group, meeting or activity coming up, you can hire either the Hall or Loftus Room – e-mail reydonvillagehall@gmail.com or phone 07508 510732.

Charlotte Clark

FUND-RAISING CONCERT FOR AMBULANCES FOR UKRAINE

In 2024 and 2025 Help2Ukraine (Suffolk) sent four ambulances equipped with supplies to Lviv, as part of a convoy of eight. In 2026, we will do the same. There is an urgent need to send ambulances to Ukraine. It is not about politics, but life and death. Supporting this cause is something you can do to make a direct and positive difference. Each year, our successful fund-raising has included donations from individuals, an auction, a cake and coffee morning, a dog show, mini-fete and sponsored walk.

In 2026, in addition to having another dog show in May, we are holding a special concert. The concert will be based on a come-and-sing rehearsal and performance of highlights of highlights from Handel's *Messiah*. This will be a joyous event, bringing together singers from choral societies across East Anglia alongside professional singers, instrumentalists and actors. There will be readings to help link the music and to place it in context. It takes the spirit of *Messiah* and invites us all to make a difference.

The venue is St. Edmund's Church, Southwold. The date is Easter Monday, 6th April 2026, with a rehearsal from 2 until 5pm, and the performance starting at 6pm. The cost will be £20 for singers, and £25 for the audience (£10 under-21s). There will be refreshments between rehearsal and concert, and in the interval. Tickets available from Ticketsource at www.ticketsource.co.uk/help2ukraine/t-plqaoln. For enquiries, please contact Alistair or Janee (alistairpbamford@aol.com; janee@spunyarns.co.uk).

REYDON SCARECROW TRAIL 2026

The Scarecrow Trail is back for 2026, the tenth time that it has been held. So, get your thinking caps on if you would like to be part of the Trail this year. You could even win a prize! The Scarecrow Trail will be over the weekend of 12th and 13th September in and around Reydon. There is no theme, so use your imaginations! Maybe resurrect one of your previous scarecrows or come up with something new to celebrate the tenth birthday!

As usual, we will be based at the Village Hall. We will be producing a programme, which means we need to know if you want to participate now, even though you do not need to make your scarecrow until September! There will be refreshments available both days as well as other things going on in the Village Hall over the weekend.

If you entered last time, you should have received an e-mail inviting you to do so again. If you didn't, you need to complete an entry form and return it by 1st July. These are available by e-mailing reydonchristmaslights@gmail.com or you can pick one up in Boydens or Bridgefoot Stores.

For the Scarecrow Trail to go ahead, we need a minimum of 35 scarecrows, so we really need to know as soon as possible that you want to enter. All funds raised will go towards Reydon Christmas Lights.

FOLLOW THE GREY BRICK ROAD TO DISCOVER A LOCAL GEM



After two years, work has now finished and a fully refurbished Sole Bay Bowls Club will once again be connected to the main Halesworth Road via Swan Green. This is a new grey brick road that will service both the Bowls Club and the Beauty Homes development.

There is not only a brand new outdoor green (just voted the Best Green by Saxmundham Bowls League), but also an indoor arena with the latest lighting, heating and air conditioning, which provides ideal conditions for both indoor bowls and social functions; members can play bowls all year.

Sole Bay is a busy but friendly club, and always welcomes new members and visitors. It is not all about bowls, though. With our new lounge, kitchen and bar area, we regularly have functions such as quiz nights, race nights, bingo, magic evenings and lots more besides. We are also pleased to regularly host groups such as Blyth Valley Rotary Club, the Reydon Quizzers and both Southwold Bridge Clubs.

In May, we plan to hold a couple of open days with refreshments to show off our hard work. There will also be opportunities to try bowls indoors and outside on our new green. Look out for adverts in local publications or social media.

NEWS FROM EAST SUFFOLK COUNCIL

Thanks to Natural England, we are having a controlled level of water in the Broad this spring at Potter's Bridge, which means that the bitterns can breed, the reeds can be cut and cars don't get damaged. The gizmo has been replaced and reports the depth every morning on the Reydon Village website. With levels rising, the sea will eventually reach the Bridge, and the road will become a ford. The only route above sea level is through Wangford. We need to think ahead on this!

Sadly, Mr. Bus closed in February, but we have set up a new non-profit company with an experienced local PSV driver. We have negotiated a price for the bus and are getting all the licences sorted. We hope to start a one-year trial in July under a Section 22 licence, which means we can go anywhere between Southwold, Darsham, Halesworth and Lowestoft. We are looking for volunteer drivers to assist our professional and also businesses to sponsor the bus.

The Harbour has appointed a project manager to work on the Caravan Site next winter and we will consult early summer.

Housing is going up in a lot of places, but at least the Copperwheat Avenue development will give us 100 affordable homes for local people over the next five years - and no new homes can be holiday lets or second homes.

David Beavan

This edition of The Reydon Robin is sponsored by Southwold Arts Festival

This edition is sponsored by:



SOUTHWOLD ARTS FESTIVAL

1st - 3rd May 2026

**MAUREEN LIPMAN
— AND FRIENDS —**

**CHRIS DIFFORD (SQUEEZE)
FEATURING DEREK NASH
& GEORGE DOUBLE**

ANDREW HARRISON

CHRIS INGHAM

ONCE UPON A TUNE

JAMES MAYHEW, CAROLINE SPECA, NATHAN WILLIAMSON

YOUNG MUSICIANS' SHOWCASE

 [SouthwoldArtsFestival](#)  [@SouthwoldArts](#)