

The Reydon Robin

*The quarterly, complimentary
news magazine, for Reydon*



A Long-eared Owl, credit: Steve Westlake (see page 7)

Summer 2025

ISSUE 15

DATES FOR YOUR DIARY

From June 2025

- Fri. 20th June** Reydon Christmas Lights Bingo at Reydon Village Hall. Doors open at 6.30pm. Eyes down at 7pm.
- Sat. 21st – Sun 22nd June** Reydon and Southwold Open Studios: Nine Artists living and working in our area. (see local posters)
- Sat. 21st – 28th June** Southwold Arts Festival & Street Festival. A week of music and entertainment. (details on back page)
- Fri. 27th June** Free Community Coffee Morning 9am – 11.30pm at Reydon Village Hall. Tea, coffee, pastries (when available) and toast.
- Sat. 28th June** Harbour Fest 2025, Southwold Sailing Club, Blackshore 2.30pm – 11.00 pm. Live music, stalls.

Quiz Night, in aid of Reydon Village Hall 7pm. £5.00pp, teams of up to 6, bring own drinks and snacks + a Raffle. Tickets: Charlotte at Southwold Library: Tel: 07715388916 frogclock@hotmail.com
- Sat. 5th July** The Village Hall Ceilidh, with the 'Once Bittern Ceilidh Band': 7pm – 10pm. £15.00 per head, to include a sumptuous Summer Buffet. Bring your own drinks.
www.ticketsource.co.uk/reydonvillagehall
or book with Charlotte: frogclock@hotmail.com
- Fri. 11th July** Official opening of The Sole Bay Mens' Shed, the Millennium Car Park, Nights Road, Southwold 5pm. Please come along if you'd like to join the group.
- Sun. 20th July** Brass on the Grass, Jubilee Green, Reydon, 12.30. Music + exciting stalls. Great fun for all the family! For stall enquiries: info@blythvalleyrotary.co.uk
- Fri. 25th July** Reydon Village hall Golden Anniversary Quiz. 7pm
Teams of six, raffle, Bring your own drinks
Tickets from Charlotte: Tel 07715 388916 frogclock@hotmail.com
- Sat. 2nd August** The Reydon Show, Reydon Village Hall, opens 2pm. A traditional country show, now it its 46th year! Entry forms + info available from Bridgefoot Stores or from Charlotte at: frogclock@hotmail.com



INTRODUCTION and WELCOME



Linda Coe, Chair,
Reydon Parish Council

It was an honour and a privilege to be elected the new Chair of Reydon Parish Council at the Annual Parish Council Meeting on 22nd May, succeeding Cllr. Pam Cyprien, who served as Chair for five years and five years as a Parish Councillor before that. Pam is a hard act to follow.

Together with all my fellow Parish Councillors, I am looking forward to working with our community of Reydon, to protect and improve our environment and public facilities, as best we can in these uncertain times.

However it's heartening to know that the Reydon and Southwold Pantry goes from strength to strength, now opening twice a week, and seems to be greatly appreciated by all our customers. For more details see (p13).

I would especially like to congratulate all those volunteers who received their 'Reydon Star' awards this year, for their outstanding contributions to the community of Reydon (see p 8 & 9). We will be continuing this initiative next year, so please keep up your very valuable work, or alternatively please keep an eye out for those who deserve recognition.

We must thank The Southwold Arts Festival and Street Festival for sponsoring this edition of *The Reydon Robin*. Please see their programme on the back of this Robin; we wish them every success this summer.

Finally *The Reydon Robin* could not thrive in the way that it does, without the wonderful volunteers who push it through your letter boxes each time. Many thanks to them and if you'd like to join their merry band, please contact *The Reydon Robin* at reydonrobin@gmail.com or 07768 395465.

Actually, it's excellent exercise!

Best wishes,

Linda Coe

The Reydon Robin is published by Reydon Parish Council. This edition is compiled and edited by Laurence Vulliamy. **The Autumn issue will be out from Friday 10th October and the copy deadline is Friday 26th September.**

If you have anything you'd like to draw our attention to, or let us have an opinion, please email *The Reydon Robin*: reydonrobin@gmail.com

THE SOUTHWOLD AND REYDON SOCIETY

‘Your Independent Voice’



The Southwold and Reydon Society was formed over 50 years ago and has over 400 members, represented by an elected Committee of 12 local volunteers. The primary remit of the Society is:

‘To protect and enhance our area, it’s character and amenities’.

The Committee meets every month and discusses current concerns, such as the impact of Sizewell C, the North Sea wind Farms and the effects of LionLink and SeaLink on our community. The Society also considers local Planning Applications carefully, to protect Southwold and Reydon from uncharacteristic or over-development. Where relevant, our comments are sent to East Suffolk Council.

The management of Southwold Harbour and The Blyth Estuary are regular concerns and the Society takes an active interest in consultations with key groups, such as the Harbour Users and the Caravan Owners Association.

Our environment is of essential interest to the Society. We are in the ‘Suffolk and Essex Coast and Heaths’ National Landscape with a coastline threatened by an alarming scale of erosion. One of the Society’s most discussed problems is the regular flooding at Potters Bridge and Quay Lane, and how this can be mitigated. We are also concerned about the new housing developments in Reydon and their impact on the local environment and upon the already over-subscribed public facilities, e.g. The Sole Bay Health Centre, dentistry and schools etc.

We have regular updates from Reydon Parish Council and Southwold Town Council; we encourage interaction between both councils where possible, and we express our concerns on matters which involve the two. We also support The Southwold Arts Centre, a very important cultural asset for both our local community and visitors.

Throughout the year we are able to give small grants to local causes, funded by donations from members, and the Society’s Annual Subscription (a modest £3.00). For more details about joining The Society and what it does, see: www.sandrsoc.org.uk

Jon Hadgraft

FROM OUR MP - JENNY RIDDELL-CARPENTER

As we head into Summer, I wanted to take the opportunity to reflect on and share some of the work I've been doing over the Spring months.

I've had the pleasure of joining local families and councillors for the official opening of the new play equipment up at The Reydon Rec. The new facilities are a brilliant addition, and it was great to see children already enjoying the space. I'm grateful to The Parish Council for inviting me along for the ribbon cutting, and for all their hard work in making it happen.

I also recently visited Reydon Primary School, and was very impressed with the warm and welcoming atmosphere, dedicated staff, and strong sense of community. We spoke about the wider challenges facing schools, including the growing need for better support for children with Special Educational Needs and Disabilities (SEND). Improving SEND provision remains one of my key priorities, and so I recently published a report based on the experiences of nearly 100 families from across Suffolk Coastal, including Reydon, and led a debate in Parliament to raise those concerns.

In Parliament, I've tabled a series of amendments to the Planning and Infrastructure Bill. It's an important piece of legislation that has the potential to unlock new housing and support economic growth across the country. But it also presents an opportunity to do more to protect our natural environment. That's why I've proposed amendments to ensure that wildlife and habitat considerations are better integrated into planning decisions, by requiring housing developers to make sure they build in for nature, with additions like nature corridors in developments, and requiring solar panels on all new builds.

I've also put forward an amendment to legally require energy developers working in the same area to coordinate their projects - helping to reduce disruption and avoid unnecessary duplication of infrastructure. I've also put forward a separate amendment that would require energy cables to be buried at a depth of at least 1.8 metres, so that land above can continue to be used productively for agriculture.

If there's something you'd like to raise with me, you can get in touch via email: jenny.riddellcarpenter.mp@parliament.uk, or ask for an appointment at one of my upcoming surgeries.

Appointments can also be requested via my website: jennyforsuffolkcoastal.org/surgeries or by calling my Constituency office on 01394 330260.

With best wishes,

Jenny

REYDON CHRISTMAS LIGHTS

The weather scuppered all our plans for Reydon's big Christmas Switch-On event last December. With a Yellow Weather Warning in place, our community could not come together to enjoy the lighting up our magnificent tree on Jubilee Green, but the village was still shining bright with all our many glittering displays.

However it is hard work. With costs always rising, we need to raise £10,000 each year to keep Reydon's Christmas Lights bright. Expenses include hiring the Village Hall for fundraising events, buying prizes for our bingo winners and raffles, providing refreshments at our events, insurance, electricity, buying the Christmas Trees, as well paying for our lights to be properly tested and the labour to put them all up and take everything down.

We are very lucky that we have a very supportive community who come to all our events, who bake for us, donate prizes, buy raffles and return on a regular basis to try their luck at Tombolas, Raffles, making scarecrows etc. We cannot thank the whole community enough for your continued support. We are a very small committee with a great band of extra volunteers, who all help to run our events.

So far this year we have held two of our very popular family bingo nights and we have also held our very first sea shanty evening with the Lowestoft Longshoremen. This was a sell out and we had a fantastic evening enjoying seafood platters, and being entertained with songs and tales from the Longshoremen, which raised around £650 after our expenses.

Upcoming events for us involve Family Bingo as they are always popular, so please put Friday, 20th June in your diary, at Reydon Village Hall. Doors open 6.30, eyes down at 7pm.

And finally, a very important date for your diaries – Saturday 6th December 2025 for the big switch-on, the lighting of the village's tree on Jubilee Green.



Credit Fiona Cooper

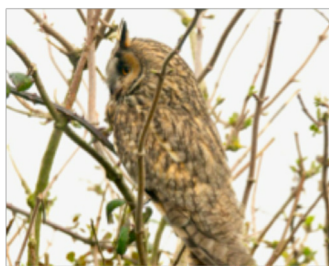
Fiona Cooper

This edition of The Reydon Robin is sponsored by Southwold Arts Festival

NOCTURNAL NATURE NOTES

There's no rest for Mother Nature, day or night, all through the year. We miss a lot because we're asleep, but very occasionally a gem or two may come our way. The following gems were recently recorded in a garden at Easton Bavents.

The Long-eared-Owl is the only British owl that is truly nocturnal, and if seen by day it is usually asleep, unless on migration.



Devoted to woodland, its preferred habitat, a few will arrive and depart along the East Coast to bask in our milder winters. Pines are its favourite trees; it builds no nest, using old Jay, Sparrow Hawk, Crow, Magpie nests and even using old Squirrels' drays to lay its eggs. In flight, the ear tufts lie flat; they are only prominent when perching or if the bird is alarmed.

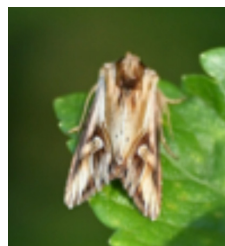
The Owl's courtship ritual includes a frantic zig-zagging chase through the woodland trees, accompanied by wing clapping reminiscent of a Nightjar. Because it is so secretive the UK numbers are difficult to predict. Best estimates are approx 1,500 pairs.

Captured in a moth trap at Easton Bavents and identified by a local eminent Lepidopterist, this Purple Cloud Moth was an unexpected find.



This moth is a rare visitor to our shores, so rare that only five have ever been recorded in Suffolk - our sighting being the fifth, and a first ever for Reydon and Southwold.

It was first recorded in Geat Yarmouth in 1839 and has only been recorded in



Britain 26 other times. It arrived from the near continent thanks to our persistent north easterlies, and we hope that due to climate change, it will eventually settle and breed here.

The larvae feed on the flowers, seeds and leaves of St John's Wort (*hypericum perforatum*), so no need to worry about your jumpers.

Quite a stunner!

Bill

Photos: Steve Westlake

THE 'REYDON STARS' 2025

(photos courtesy of Jonathan Hadgraft)

At Reydon's Annual Parish Meeting on 24th April, the 2025 'Reydon Stars' were unveiled. These Reydon Parish Council awards, now in their third year, have been nominated by Reydon residents and selected by a panel, recognising 'outstanding contributions to the local community' by a volunteer or group. The certificates were presented by Suffolk Deputy Lieutenant, Erika Clegg and Pam Cyprien, Chair of The Parish Council.

The first award was presented to **The Reydon and Southwold Lifeboat Crew**, in the RNLI's 200th Anniversary Year, for their selfless dedication to life-saving and marine safety. It was collected by former Lifeboat Operations Manager Gary Doy, active Helm Sam Doy and crewman Jeremy Taylor.



Next a couple who have devoted most of their spare time to the community. **Carol and Nick Horton** have collected nearly £150,000 for The British Legion's Poppy Appeal to date, Nick has been a Community First Responder for 14 years, and has driven for The Voluntary Help Centre for 15 years. Carol has been a steward at Southwold Museum for 14 years and has cooked lunches for the VHC's Lunch Club for 10 years.

Brenda Doy was unable to attend the ceremony, but was awarded a 'Reydon Star' for her many years of work with Girl Guiding and helping at Sunday School at St Margaret's Church. Brenda even came up with the idea for Reydon's Scarecrow Trails. **Jim Elmes** has worked for the community for many, many years, with help in devising The Village and Neighbourhood Plans, and Jim continues to keep all the village noticeboards up to date.

Dorcas and Ray Rogers were awarded a 'Reydon Star' for their very effective fundraising for St Margaret's Church and their invaluable, continuing work as Treasurer and Bookings Secretary respectively, at Reydon Village Hall.

For many years **Philip Burkhill** has maintained the Commonwealth War Graves headstones in Reydon



Churchyard, often with the help of his wife Rosemary and his sister Helen. They have ensured the memorials are all pristine for Remembrance Day every year.



Nick Elvin from Redcap Farm Tree Services has given many hours of his work free of charge, to the village's public spaces, notably the Recreation Ground. Nick has enabled all The Parish Council's recently installed play equipment to be commissioned safely and securely, for the enjoyment and benefit of the residents and children. Nick was duly awarded a 'Reydon Star'.



The second Team Award went to **The Drivers of 'Mr Bus'**. This provides vital and much-needed transport links around Reydon and Southwold, and over the years many volunteers have devoted their free time to this service. But 'Mr Bus' always needs more drivers. To receive the 'Reydon Star' were Chris Chapman, Iain Small, Alastair Marshall, Paul Luke, James Halsall, Mark Williamson, Alison Evans, Winston Hendrickson, and Philip Tarris. The certificate will be displayed in the Sole Bay Health Centre.



Finally, the last 'Reydon Star' this year was awarded to **Pam Cyprien**, the outgoing Chair of Reydon Parish Council for her five years as Chair, and her more than five years as a Parish Councillor before that. The citation read:

'You have led a very successful Parish Council, with not only many ambitions, but also the collective determination to see them through, all to the great benefit of the local community.'



The Reydon Stars will continue next year. Please send your nominations for 'outstanding contribution to the community, by a team or volunteer' to Ann Dobson, Parish Clerk c/o: reydon.pc@gmail.com and thank you. Your nominations are very important, and without them the 'Stars' could not be awarded.

THE SOLE BAY MEN'S SHED

Opening on Friday 11th July at 5pm

The Southwold Millenium Foundation is a registered charity with the aim of working for the benefit of the community, and was set up in 1998 mainly to rebuild the Stella Peskett Hall in Mights Road, Southwold. Once built, the Foundation was then bequeathed the freehold of the marsh land opposite by the Town Council with the intension of developing a car park to help free up the Town during the busy summer months.

Men's Sheds are mainly grassroots community activities that come about in response to shared needs. These have mostly been for men to access tools, workbenches, skills and opportunities to make and mend in the company of others. Sheds bring health benefits by encouraging physical and mental activity and improved well being by providing an enjoyable way to stay socially integrated in local communities by being creative and learning or passing on skills.



In March 2024 the inaugural meeting for a Men's Shed was attended by 12 individuals who formed a working committee to raise funds to buy a building on the Millenium Car Park field. With valuable financial support by The Southwold and Reydon Trusts, The East Suffolk Community Partnership, The Hopkins Trust and The Cripps Trust a building has been purchased and is being fitted out, so its doors can be open to all men within the Southwold, Reydon, Wangford and Wrentham area.

The 'Women Like Me' charity will also be accommodated on the Millenium Field. They are raising money to establish a base there. Please see: www.denburyhomes.co.uk/news/women-like-me-southwold/

If you'd like to become a Member of the Sole Bay Men's Shed, please come along to the opening on Friday 11th July at 5pm. Membership is £20.

If you are interested in the work of the Southwold Millenium Foundation and would like to become a Trustee (or indeed a member of the Men's Shed), please contact Michael Ladd on m.ladd@sky.com

Michael Ladd

LETTER FROM SOUTHWOLD

It is a great honour to be elected for a third term as Mayor of Southwold, and I feel humbled by the trust my fellow councillors have put in me. The Council has achieved many significant projects over the last two years.

In the Strategic Plan, Southwold Town Council (STC) is committed to making the town a better place for residents, businesses and visitors. The Council is focusing on key projects to enhance the community, economy, public places and sustainability ensuring Southwold remains a thriving and welcoming town. To achieve the goals a budget has been developed to fund these improvements while keeping costs manageable for residents. Grants will be applied for, and income will be increased where possible.

One of the highlights of the last two years are the improvements to the roads. Firstly, York Road was resurfaced, followed by Pier Avenue, Park Lane, East Street, Ferry Road and Mill Lane. The Roads Committee are committed to introducing a 20-mph speed limit in the High Street, traffic calming measures, improved signage and road markings.

STC are actively canvassing The Suffolk Community Fund for financial support, following the impact of the infrastructure projects. Consultations on Sealink and other projects have been launched. STC is actively involved in the devolution proposals which could have major implications on how the town is run in the future. Watch this space.

STC has also been actively involved in the Harbour issues, including a new Harbour Revision Order and the proposed redevelopment of the Caravan site. STC is exploring the community accessibility and viability of the Grade II-listed Town Hall Building. Good news is Southwold have received the Blue Flag and Seaside Awards for 2025.

There is still much to do and challenges ahead, but with a positive and forward-thinking strategy I am confident the town will thrive.

Simon Flunder, Town Mayor

WANTED! Volunteers to help distribute *The Reydon Robin*.

Every quarter, this is distributed to all households in Reydon by our wonderful and dedicated team of volunteers.

We are looking for more people to join them.

So, can you spare a few hours in the open air every few months to help out? Please get in contact with us for more details
(e-mail: reydonrobin@gmail.com).

Every little bit of help will be greatly appreciated!

ST MARGARET'S CHURCH

Welcome!

I received an email the other day from someone who comes to one of our churches in the Sole Bay Team. She had brought a relative to church, and this is roughly what the email said: 'Despite having been brought up going to Church, sadly she (the relative) is now a sceptic, at best, or a non-believer bordering on critical, at worst!'

She came with her husband and two children because I happened to be doing one of the readings at the service - unfortunately I don't think otherwise she'd have ever attended.

She was bowled over! She found everyone incredibly welcoming and friendly and loved the service! She said it seemed so genuine, natural and unforced - everything seemed to happen so happily without anyone having to try too much. Even though I couldn't introduce her to anyone, as she arrived only just in time, she still found a fantastic welcome!

That kind of email is not only affirming for the clergy team and all those involved in our local churches, but it might be helpful for lots of people who are not sure about coming to church for whatever reason, and who worry about what kind of experience they might have if they came along for the first time. I hope quoting that email might help dispel some of those worries. There are normal people behind those big oak doors who are not going to pounce on you to run the coffee morning, but who would genuinely like to see you and who are on the same journey as you.

At Coventry Cathedral, there is a notice of welcome which says (adapted for our area):

'We extend a special welcome to those who are single, married, divorced, widowed, straight, gay, confused, well-heeled or down-at-heel. We especially welcome wailing babies and excited toddlers. We welcome you whether you can sing like Pavarotti or just growl quietly to yourself. You're welcome here if you're just browsing, just woken up or just got out of prison. We don't care if you're more Christian than the Archbishop of Canterbury or haven't been to church since Christmas 10 years ago. We extend a special welcome to those who are over 60, but not grown up yet and to teenagers who are growing up too fast.

We welcome keep-fit mums, football dads, starving artists, tree huggers, latte sippers, vegetarians, junk food eaters. We welcome those who are in recovery or still addicted. We welcome you if you're having problems, are down in the dumps or don't like organized religion. We're not that keen on it either. We offer welcome to those who think the Earth is flat, work too hard, don't work, can't spell, or are here because Granny is visiting and wanted to come to the church. We welcome those who are inked, pierced, both or neither.

We offer a special welcome to those who could use a prayer right now, had religion shoved down their throats as kids, or got lost on the A12 and wound up here by mistake. We welcome pilgrims, tourists, seekers, doubters and you.'

So . . . if I was going to be the new Vicar of Reydon (which I am not and sadly no applicants yet), it would be my ambition to nail that welcome notice to the door! **Rev. Philip Tarris**

THE REYDON SHOW

Reydon Village Hall, Saturday 2nd August, opening at 2pm.

'plan your preserves, ready your radishes and corral your carnations!'

Are you a baker, an artist, a photographer, a crafter, a sewer, a knitter, gardener or a flower arranger? Then why not enter the Reydon Show? The show celebrates your talents, big and small, plus there are certificates and trophies to be won.

Entries have to be in on the Friday night (1st August) or the Saturday morning and the exhibition opens at 2pm. We also have a range of children's categories open to kids under 12, so if your child is a keen maker of Lego, a gardener or an arts and crafter, they can enter too – and kids enter free! Entry forms are available at Bridgefoot Stores, Reydon or can be emailed to you, if you contact Charlotte: frogclock@hotmail.com

Photographic categories this year are: 'Seed Heads'; a black & white photo of any subject; 'a Rainy Day' and 'Animals At Work'.

The Reydon Show is a traditional country show, held in Reydon Village Hall each year since 1979. Anita Freeman writes: 'Previously there had been a poultry and egg competition in the old hut' [the old hall on the corner of Covert Rd and Jermyn's Rd]

'When we started to help at the show, one of the classes was six eggs.'

Charlotte Clark

THE REYDON & SOUTHWOLD COMMUNITY PANTRY

May saw the second anniversary of the opening of the Reydon & Southwold Community Pantry. What was originally a short-term help to the local community has quickly changed into a vibrant and welcoming regular part of the village scene. We're now open every Tuesday afternoon (12.30-15.00hrs) and all day Friday (09.00-15.00hrs).

Any residents of Reydon or the surrounding area are very welcome to visit.

We are not a foodbank, we are a sustainability initiative trying to do our bit to stop food wastage, so there are no vouchers, tickets or forms to fill in. Just come and choose up to ten items (per household) from our shelves, fridges and freezers . . . and all for free.

How does it work? We have a team of drivers, led by Cllr. Sarah Jerman, who collects stock every evening from local supermarkets and most days from Bookers (mileage paid). Other retail outlets, such as The Cornish Bakery supply us on fixed days. We have also expanded to stock items donated to us from Waveney Hygiene Bank. Another team are our volunteers who staff the Pantry, and without them we couldn't open. They offer whatever time they can with rotas changing on a monthly basis.

Or maybe join our teams of drivers and volunteers . . . we can always do with more help! Please contact Linda Coe, Kim Harvey or Sarah Jerman, either through The Clerk to Reydon Parish Council, Ann Dobson: reydon.pc@gmail.com or email me: linda.coe@btinternet.com

THE OPENING OF THE NEW PLAY EQUIPMENT ON REYDON REC.

On a bright but breezy Friday, May 2nd, the new play equipment at Reydon Rec. was officially opened by Jenny Riddell-Carpenter MP in a well-attended ribbon-cutting ceremony. This project, backed by Reydon Parish Council, highlights its ongoing commitment to enhancing local amenities for residents and marks the culmination of years of hard work by Parish Councillors.

Cllr. Kalvyn Friend, one of the original champions of the project, expressed his delight at seeing it finally completed. He also acknowledged the significant contributions of his fellow Councillors, especially those on the Green Spaces Working Group, for their commitment in bringing the project to fruition.

Jenny Riddell-Carpenter was delighted to be invited to the opening ceremony, and emphasised the importance of such developments in encouraging outdoor activity and fostering community well-being. The upgraded Rec. is already proving to be a hit with children of all ages.

Dominic Knight



THE LIGHTHOUSE LADIES



The year has begun very well for the Lighthouse Ladies, whose numbers have grown since the beginning of the year. We continue to have some excellent speakers, varying from Colin Huggins talking about the history of Blythburgh Church, through Vicky Eyles discussing Carlton Marshes to Diane Lindsay, a talented local artist who brought many of her canvases to the Village Hall, discussing how she had developed her skills and produced so many lovely pieces of work for us to enjoy.

The variety of subjects which our Speaker Secretary Linda Whiting has encompassed this year has been excellent and we are looking forward to more evenings of friendship and good fun, whilst enjoying finding out about more local and national topics throughout the forthcoming months.

The Lighthouse Ladies meet at 7.30pm, every third Tuesday in the month at Reydon Village Hall. If anyone is interested in joining us, please contact:

linda.coe@btinternet.com

Linda Coe

THE MEMORIAL BENCH FOR DAVID WOODS

On a sunny Friday afternoon, 11th April 2025, members of the community gathered at Reydon Corner to dedicate a memorial bench in honour of David Woods, whose recent passing has been deeply felt by so many. The bench, placed in a prominent position at Reydon Corner, serves as a lasting tribute to David's legacy. The flowers, glowing in the sunlight that day, beautifully reflected his achievements.

During the dedication ceremony, Pam Cyprien, Chair of Reydon Parish Council, expressed heartfelt gratitude for David's years of service and his kindness to all. Organised with the support of the Parish Council, the event offered friends, family, and neighbours a chance to reflect on David's great contribution to village life and his unwavering commitment to the community. Afterwards a memorial tea was served at Reydon Village Hall.

As Sir Christopher Wren's epitaph so fittingly says: 'Reader, if you seek his monument, look around you.'

Dominic Knight

This edition is sponsored by:



.....21st - 28th June 2025.....

ROBERT POWELL DEREK NASH
PAUL JONES & JOHN ETHERIDGE
MUSIC, MAYHEM & A MEZZO
MARK FLANAGAN TRIO
CHRIS INGHAM QUARTET & JOANNA EDEN
NATHAN WILLIAMSON, ROB GILDON
& BOB JELICOE ANDREW HARRISON

**STREET
FESTIVAL**

Saturday 21st June 2025

LIVE MUSIC STALLS
FOOD & DRINK

southwoldartsfestival.co.uk

◆ SouthwoldArtsFestival

◆ @SouthwoldArts

Rotary
Blyth Valley

